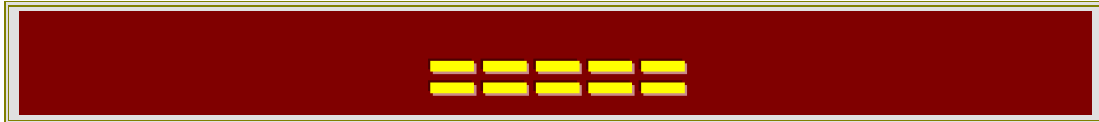


# HRODC Ltd.



## HRODC Ltd QUOTATION



**With Kindest Regards,**

A stylized, handwritten signature in gold ink, appearing to read "R. B. Crawford".

**Prof. Dr. R. B. Crawford**  
**Chief Executive**



---

Human Resource and Organisational Development Consultancy (HRODC) Ltd. Registered in England No. 6088763.

**Registered Office:** 122A Bhylls Lane, Castlecroft, Wolverhampton, West Midlands WV3 8DZ, UK

Prof. Dr. R. B. Crawford

PhD (London), MEd.M. (Bath), Adv. Dip. Ed. (Bristol), PGCIS (TVU), ITC (UWI), MAAM, MAOM, LESAN, MISGS. Visiting Prof. P.U.P.  
Chief Executive & Chief Consultant – HRODC Ltd.



V.A.T. # 8958 765 38

	<h1>HRODC Ltd.</h1>	
<p>122A Bhylls Lane, Wolverhampton, WV3 8DZ, UK Telephone: +44 (0) 1902 763 607 +44 (0) 1902 569133 Mobile: +44 (0) 7736 147507 E-mail: <a href="mailto:consult@hrod-consultancy.com">consult@hrod-consultancy.com</a> <a href="mailto:sales@hrod-consultancy.com">sales@hrod-consultancy.com</a> Website <a href="http://www.hrod-consultancy.com">http://www.hrod-consultancy.com</a></p>		<p>328 Linen Hall, 162-168 Regent Street, London. W1B 5TD, UK Telephone: +44 (0) 20 82657008 +44 (0) 20 84809628 Mobile: +44 (0) 7736 147507 E-mail: <a href="mailto:consult@hrod-consultancy.com">consult@hrod-consultancy.com</a> <a href="mailto:sales@hrod-consultancy.com">sales@hrod-consultancy.com</a> Website <a href="http://www.hrod-consultancy.com">http://www.hrod-consultancy.com</a></p>
<h2>Human Resource and Organisational Development Consultancy (HRODC) Ltd.</h2>		

# HRODC Ltd QUOTATION

<b>To:</b>	
<b>Quotation #</b>	
<b>Req. Ref.</b>	NA
<b>Date Issued:</b>	
<b>Validity Period:</b>	30 Days
<b>Prepared By:</b>	Prof. Dr. R. B. Crawford
<b>Number of Pages:</b>	8

### HRODC Ltd – Legal Parameter

Human Resource and Organisational Development Consultancy (HRODC) Ltd is Registered in England, with Registration Number 6088763. Its VAT Registration is: 8958 765 38. It is directly accountable to, and monitored by, several government agencies, including Companies House, an Executive Agency of the Department for Business, Enterprise and Regulatory Reform (BERR). All 'Offices' of HRODC Ltd, including National Representatives are subject to public scrutiny and transparency. Its Registered Office is 122A Bhylls Lane, Castlecroft, Wolverhampton, West Midlands WV3 8DZ, UK, with Office in London UK. It has National Representatives in Nigeria, Ghana, Cameroon, United Arab Emirates (UAE), Kingdom of Saudi Arabia, among others. Prof. Dr. R. B. Crawford, PhD (London), MEd.M. (Bath), Adv. Dip. Ed. (Bristol), PGCIS (TVU), ITC (UWI), MAAM, MAOM, LESAN, MISGS. Visiting Prof. P.U.P. is its Chief Executive.

Human Resource and Organisational Development Consultancy (HRODC) Ltd. Registered in England No. 6088763. 2

**Registered Office:** 122A Bhylls Lane, Castlecroft, Wolverhampton, West Midlands WV3 8DZ, UK

Prof. Dr. R. B. Crawford

PhD (London), MEd.M. (Bath), Adv. Dip. Ed. (Bristol), PGCIS (TVU), ITC (UWI), MAAM, MAOM, LESAN, MISGS. Visiting Prof. P.U.P.  
Chief Executive & Chief Consultant – HRODC Ltd.



V.A.T. # 8958 765 38

# Quotation

Column Number						
Row No.	1	2	3	4	5	6
	Product or Service	Product/Service #	Short Description	Quantity	Unit Price	Total Cost in GB Pounds
1.	Asphalt Mixing Plant	HRODC_AP13	HRODC_AP13 60 Tons Per Hour Fixed Asphalt Plant	1	\$294,350.00	\$294,350.00
<b>Subtotal</b>		Excluding Delivery, installation and training				
<b>Delivery</b>		8×40 HQ Containers to Accommodate plant 6 Weeks Manufacture + 5 - 8 Weeks Shipping				\$40,000.00
<b>Installation</b>		Direct Installation of Plant and train local engineers				\$20,000.00
<b>V.A.T. @</b>		Europeans Only				
<b>Grand Total</b>						
<b>Payment Terms</b>		<ol style="list-style-type: none"> <li>The prices, above, exclude delivery, installation and training. These costs will be advised at your request.</li> <li>Machines costing in excess of US\$40,000.00 require a deposit of 50% by Telegraphic Transfer (TT) or bank counter credit, at the time of order. The remaining 50%, by Irrevocable Letter of Credit (ILC), is required one week before shipment of the complete item.</li> <li>100% of the cost of items of up to US\$40,000.00 is required at the time of order.</li> </ol>				

Human Resource and Organisational Development Consultancy (HRODC) Ltd. Registered in England No. 6088763. 3

**Registered Office:** 122A Bhylls Lane, Castlecroft, Wolverhampton, West Midlands WV3 8DZ, UK

Prof. Dr. R. B. Crawford

PhD (London), MEd.M. (Bath), Adv. Dip. Ed. (Bristol), PGCIS (TVU), ITC (UWI), MAAM, MAOM, LESAN, MISGS. Visiting Prof. P.U.P.  
Chief Executive & Chief Consultant – HRODC Ltd.

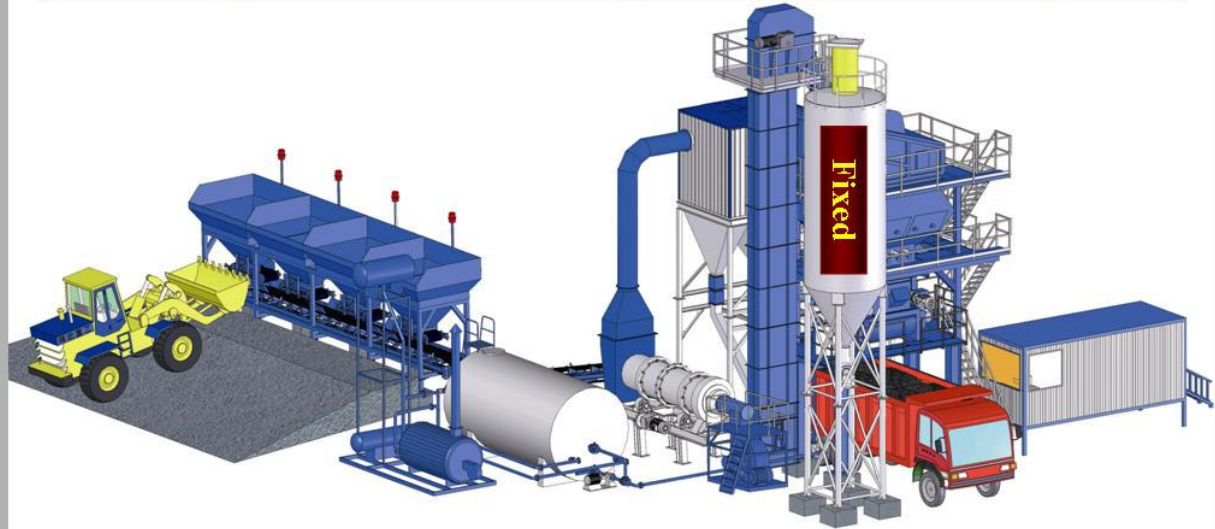


V.A.T. # 8958 765 38

# Product Description

## Start of HRODC\_AP13 60 Tons Per Hour Fixed Asphalt Plant Description

### HRODC\_AP13 60 Tons Per Hour Asphalt Plant - Tarmac Mixing Plant



Human Resource and Organisational Development Consultancy (HRODC) Ltd. Registered in England No. 6088763. 4

**Registered Office:** 122A Bhylls Lane, Castlecroft, Wolverhampton, West Midlands WV3 8DZ, UK

Prof. Dr. R. B. Crawford

PhD (London), MEd.M. (Bath), Adv. Dip. Ed. (Bristol), PGCIS (TVU), ITC (UWI), MAAM, MAOM, LESAN, MISGS. Visiting Prof. P.U.P.  
Chief Executive & Chief Consultant – HRODC Ltd.



V.A.T. # 8958 765 38

## HRODC\_AP13 60 Tons Per Hour Asphalt Plant - Tarmac Plant



Item	Configuration	Quantity	Capability/ Summary
1 Batching System	(6m <sup>3</sup> ) Aggregate Bin(6m <sup>3</sup> )	4	40T/h ≥60 T/h Stand-alone Output 40T/h Frequency Conversion Slant Conveyor: ≥60 T/h With no-materials alarm-reporting system
	Horizontal Conveyer	4	
	400mm Belt 400mm	4	
	1.5kw Frequency Conversion Electric Roller (1.5kw)	4	
	Slant Conveyer	1	
	400mmx24m Belt 400mmx24m	1	
	3kw Electric Roller (3kw)	1	
	MVE200/3 Vibrator MVE200/3	1	
2 Belt Delivery	400mmx16m Belt 400mmx16m	1	: ≥60T/h Delivery Capacity: ≥60T/h
	3kw Electric Roller (3kw)	1	
	Belt delivery machine's frame	1	
3 Burner System	Burner	1	450L/h Oil Consumption 300L/h
	Oil pipeline and Frame	1	

Human Resource and Organisational Development Consultancy (HRODC) Ltd. Registered in England No. 6088763.

**Registered Office:** 122A Bhylls Lane, Castlecroft, Wolverhampton, West Midlands WV3 8DZ, UK

Prof. Dr. R. B. Crawford

PhD (London), MEd.M. (Bath), Adv. Dip. Ed. (Bristol), PGCIS (TVU), ITC (UWI), MAAM, MAOM, LESAN, MISGS. Visiting Prof. P.U.P.  
Chief Executive & Chief Consultant – HRODC Ltd.



V.A.T. # 8958 765 38

Item	Configuration	Quantity	Capability/ Summary
	Temperature Automatic System	1	Fuel: Diesel or Heavy Oil
	Diesel tank - <b>Not Supplied</b>		
4 Dryer roller	φ1300×5000 Roller φ1300×5000	1	≥60T/h Dryer Capacity ≥60T/h
	Frame, support roller, resist roller	1	
	Feed case	1	
	Discharge case	1	
	18.5kw Reducer 18.5KW	1	
5 Hot Aggregate Elevator	Case, Hopper and others	1	≥60T/h 13m Hoisting Capability ≥60T/h Elevation Height 13m
	Chain		
	5.5kw Reducer 15KW		
6 Vibrating Screen	4LZSF-60	1	≥60T/h Screen Capability ≥60T/h
7 Hot Aggregate Bin	Case, Landing and others	1	9m <sup>3</sup> Case Capacity 9m <sup>3</sup>
	Level Indicators (Heat-resistant)	4	
	φ100 Cylinderφ100	4	
8 Aggregate Weighing Bin	Metering Bucket	1	0~1000kg ±0.50% Range of Calculation 0~1000kg Calculation Accuracy ±0.50%
	Weighing Sensor	4	
	φ100 Cylinderφ100	1	
9 Powder Weighing Bin	Metering Bucket	1	0~200kg ±0.35% Range of Calculation 0~200kg Calculation Accuracy ±0.35%
	Weighing Sensor	1	
	Pneumatic Butterfly Valve	1	
	Vibrator	1	
	Powder Conveyor Screw	1	
10 Asphalt Weighing Case	Metering Bucket Heated by Heating Oil	1	0~200kg ±0.25% Range of Calculation 0~200kg Calculation Accuracy ±0.25%
	Weighing Sensor	1	
	Pneumatic Butterfly Valve Heat-resistant	1	
11 Mixing Engine	Mixer	1	750kg/ 50% 45S
	Reducer	1	
	30kw Motor 30kw	1	

Human Resource and Organisational Development Consultancy (HRODC) Ltd. Registered in England No. 6088763.

**Registered Office:** 122A Bhylls Lane, Castlecroft, Wolverhampton, West Midlands WV3 8DZ, UK

Prof. Dr. R. B. Crawford

PhD (London), MEd.M. (Bath), Adv. Dip. Ed. (Bristol), PGCIS (TVU), ITC (UWI), MAAM, MAOM, LESAN, MISGS. Visiting Prof. P.U.P.  
Chief Executive & Chief Consultant – HRODC Ltd.

6



V.A.T. # 8958 765 38

Item	Configuration	Quantity	Capability/ Summary
	Metering & Mixing Frame, Landing and others	1	Volume 750kg/batch Full Rate: 50% Mixing Period: 45S
	φ125 Cylinderφ125	1	
12 Pneumatic System	Air Compressor	1	1.5m <sup>3</sup> /min 0.7Mpa Air Volume 1.5m <sup>3</sup> /min Air Pressure 0.7MPa
	0.6m <sup>3</sup> Gas Storing tank 0.6m <sup>3</sup>	1	
	Electromagnetic Valve	1	
	Three Units and Two Units etc of Pneumatic Control	2	
	Pipeline System	1	
13 Bag Type Dust Cleaning System		1	Concentration of Discharging Powder and Dust ≤50mg/Nm <sup>3</sup>  Wind Volume 22500 m <sup>3</sup> /h
	Bag Type Dust Cleaning Case and Frame	1	
	No-mix Bag Type Pulse Valves		
	High Level Indicator	1	
	Wind Pipe	1	
	Induced Draft Fan	1	
	Electric Air Valve	1	
	Butterfly Valve (Manual)	2	
Powder Recovery Scale's Screw	1		
14 Aggregate Feed System	Screw conveyer	1	30 Powder Bin: 30T
	Powder Bin	1	
	Pneumatic Impact Pad	6	
	Level Indicator	2	
	Butterfly Valve (Manual)	1	
	Dust Catcher	1	
15 Asphalt Feed System	Asphalt Bin (Heat preservation & Heating)	1	45 20T/h Asphalt Storage Tank 45T Output 20T/h
	Asphalt Pipeline and Heat Preservation Valve and Mine Cotton	1	
	Metal Tube	1	
	φ100 Cylinderφ100	1	
	Asphalt Pump	1	
16 Heat Oil Furnace	Heat Oil Furnace & High-Low Bin and others	1	Heat Oil Furnace Capability 200,000kcal/h
	Burner	1	

Human Resource and Organisational Development Consultancy (HRODC) Ltd. Registered in England No. 6088763. 7

Registered Office: 122A Bhylls Lane, Castlecroft, Wolverhampton, West Midlands WV3 8DZ, UK

Prof. Dr. R. B. Crawford

PhD (London), MEd.M. (Bath), Adv. Dip. Ed. (Bristol), PGCIS (TVU), ITC (UWI), MAAM, MAOM, LESAN, MISGS. Visiting Prof. P.U.P.  
Chief Executive & Chief Consultant – HRODC Ltd.



V.A.T. # 8958 765 38

Item	Configuration	Quantity	Capability/ Summary
	Heat Oil Furnace Auto-control Case	1	
	Heat Oil Furnace and Heat Preservation Valve and Mine Cotton	1	
	Heat Oil Pump	1	
17 Electrical Control System	Control Room	1	PLC Control Type: PLC Automatic, Semi-automatic, Manual Double Control Machine Hot Spare, Dynamic Display, No Button, All the operation finished by mouse
	Control Components	1	
	Frequency Conversion Equipment	4	
	PLC	1	
	Control Machine	2	
	LCD Colour Display	2	
	Printer	1	
	Cable	1	
	Air-conditioner	1	
	USB Electrical Source	2	

**End of HRODC\_AP13 60 Tons Per Hour Fixed Asphalt Plant Description**

With Kindest Regards,



**Prof. Dr. R. B. Crawford**  
Chief Executive

